

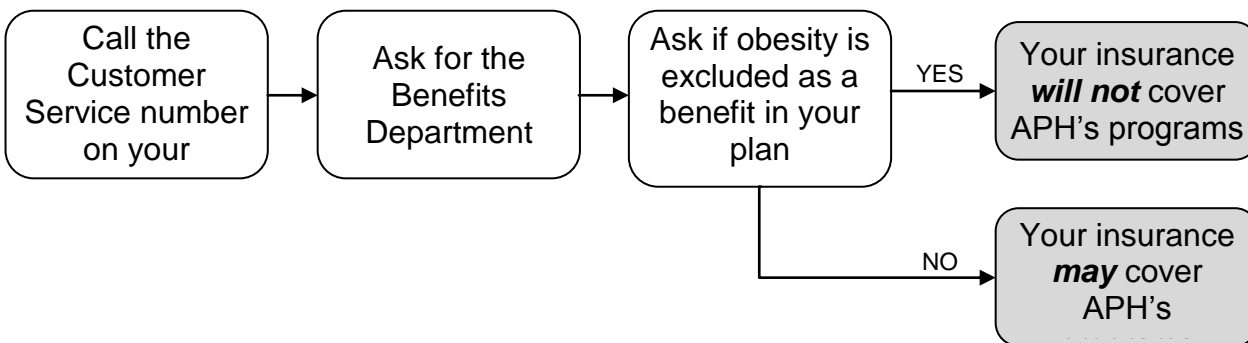
# ALASKA PREMIER HEALTH

3300 Arctic Blvd., #101 • Anchorage, AK 99503  
907.561.3488 • [akpremierhealth@yahoo.com](mailto:akpremierhealth@yahoo.com)  
[www.alaskapremierhealth.com](http://www.alaskapremierhealth.com)

## DETERMINING YOUR INSURANCE COVERAGE

We will bill primary insurance for patients whose insurance covers weight management. Many, but not all insurance companies offer some form of coverage. We encourage you to determine if you are covered for your visits to Alaska Premier Health, and want to assist you in getting the information you need. As of January 1, 2018, **Federal Blue Cross, ASEA - Local 52, IBEW, NEA/Public Education Trust, Premera (select groups), Aetna (select groups), United Health care (select groups), CIGNA (select groups), Meritain (select groups), and others HAVE provided coverage.** If your insurance company is not listed here, or if you are unsure of the amount of coverage, please follow the instructions below to determine your coverage.

### PLEASE REMEMBER: BENEFITS QUOTED ARE NOT A GUARANTEE OF PAYMENT



If your insurance does NOT exclude obesity as a benefit of your coverage, you may be asked a series of questions to determine your coverage. Here are the most commonly asked questions, and the answers you should give them:

**Q.** What kind of program is it?

**A.** Our programs are physician managed, non-surgical weight loss, billed as an office visit with diagnostic tests

**Q.** Is the provider in-network?

**A.** We are in-network for Aetna, Blue Cross/Blue Shield (Premera), United Health Care and Cigna

**Q.** What diagnosis codes do we commonly bill for?

**A.** E66.3, E66.9, E66.01, Z71.3, F50.81

**Q.** What procedure codes do we commonly bill for?

**A.** 99204, 80050, 80061, 84550, 83036, 8100, 93000, 36415, 99213, 99214

If you do not know what your co-pay is or whether you've met your deductible, make sure you ask these questions while you are on the phone with your representative.

We are happy to assist you in determining your coverage if you are unable to get an answer from your insurance company or have additional questions. Please call us at 561-3488.